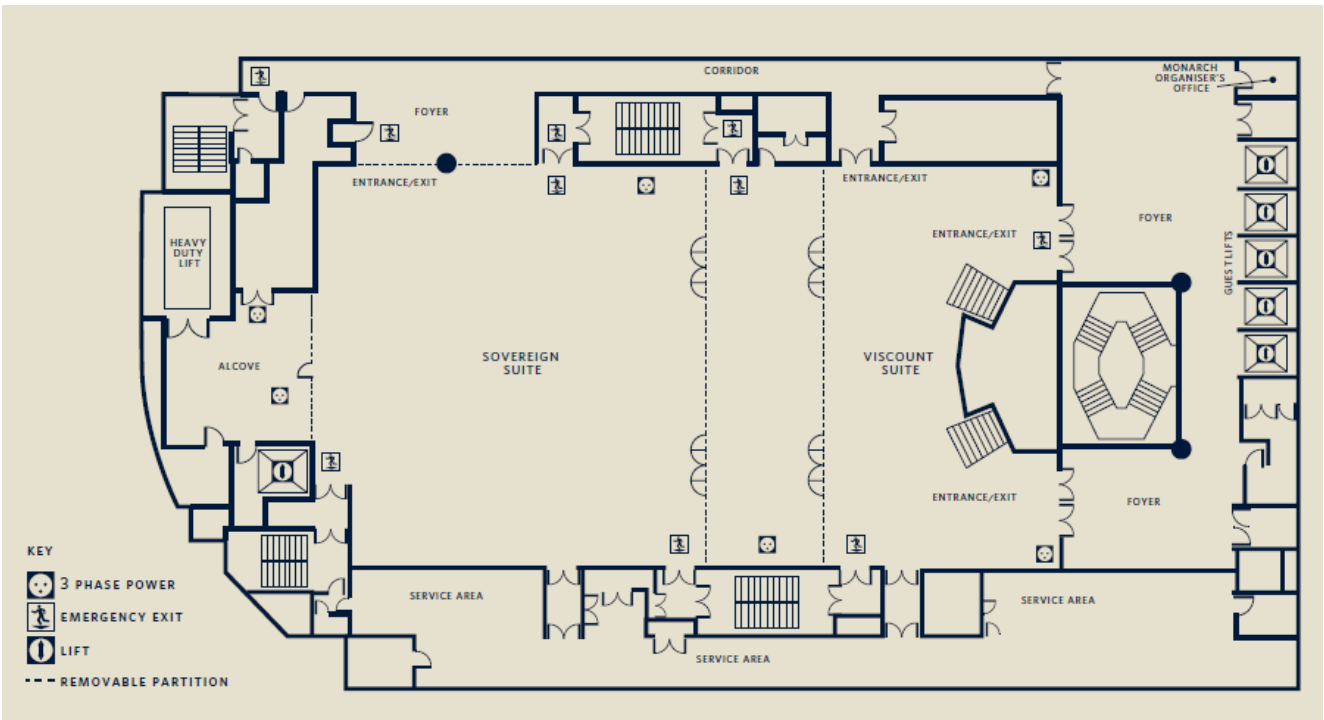


Monarch Suite

	Boardroom	Theatre	Cabaret	Classroom	Lunch/Dinner	Dinner Dance	Reception	Dimensions L x W x H (ft)	Dimensions L x W x H (m)	Area (ft ²)	Area (m ²)
Monarch suite											
Complete	—	1,600	600	650	1,000	800	1,500	1772" x 777" x 14'6"	54 x 23.7 x 4.48	11,431	1,062
Sovereign 1	—	650	280	320	470	420	800	1076" x 777" x 14'6"	32.8 x 23.7 x 4.48	6,867	638
Sovereign 2	—	800	400	390	650	600	1,100	1312" x 777" x 14'6"	40.0 x 23.7 x 4.48	8,719	810
Viscount 1	—	200	100	—	120	—	300	457" x 777" x 14'6"	13.9 x 23.7 x 4.48	3,574	332
Viscount 2	—	400	280	150	420	390	500	694" x 777" x 14'6"	21.2 x 23.7 x 4.48	4,542	422

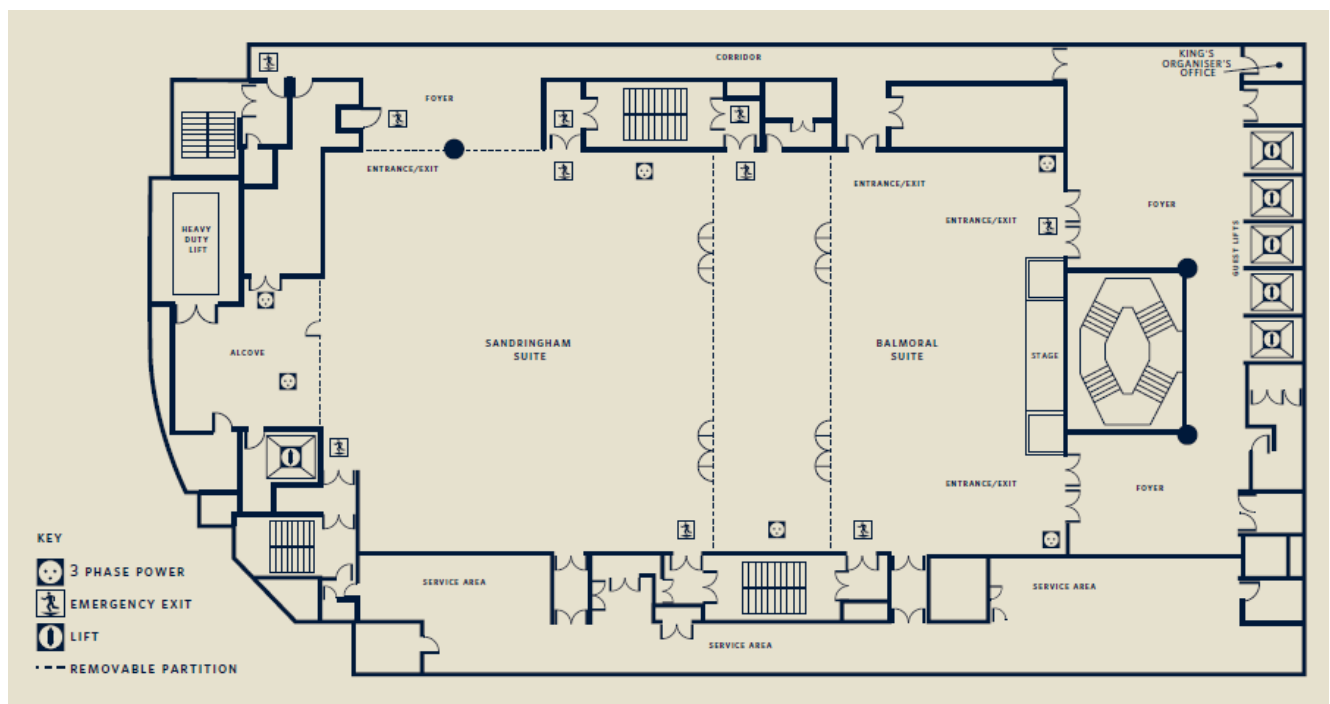
Floor Plan



King's Suite

CAPACITIES AND DIMENSIONS											
	Boardroom	Theatre	Cabaret (8 per table)	Classroom	Lunch/Dinner	Dinner Dance	Reception	Dimensions L x W x H (ft)	Dimensions L x W x H (m)	Area (ft ²)	Area (m ²)
King's suite											
Complete	—	1,650	728	930	1,050	880	1,600	1772" x 777" x 14'6"	54 x 23.7 x 4.48	11,431	1,062
Sandringham 1	—	650	336	450	620	420	800	1076" x 777" x 14'6"	32.8 x 23.7 x 4.48	6,867	638
Sandringham 2	—	800	448	672	770	600	1,100	1312" x 777" x 14'6"	40.0 x 23.7 x 4.48	8,719	810
Balmoral 1	—	460	224	320	280	240	400	457" x 777" x 14'6"	13.9 x 23.7 x 4.48	3,574	332
Balmoral 2	—	750	344	420	490	420	600	694" x 777" x 14'6"	21.2 x 23.7 x 4.48	4,542	422

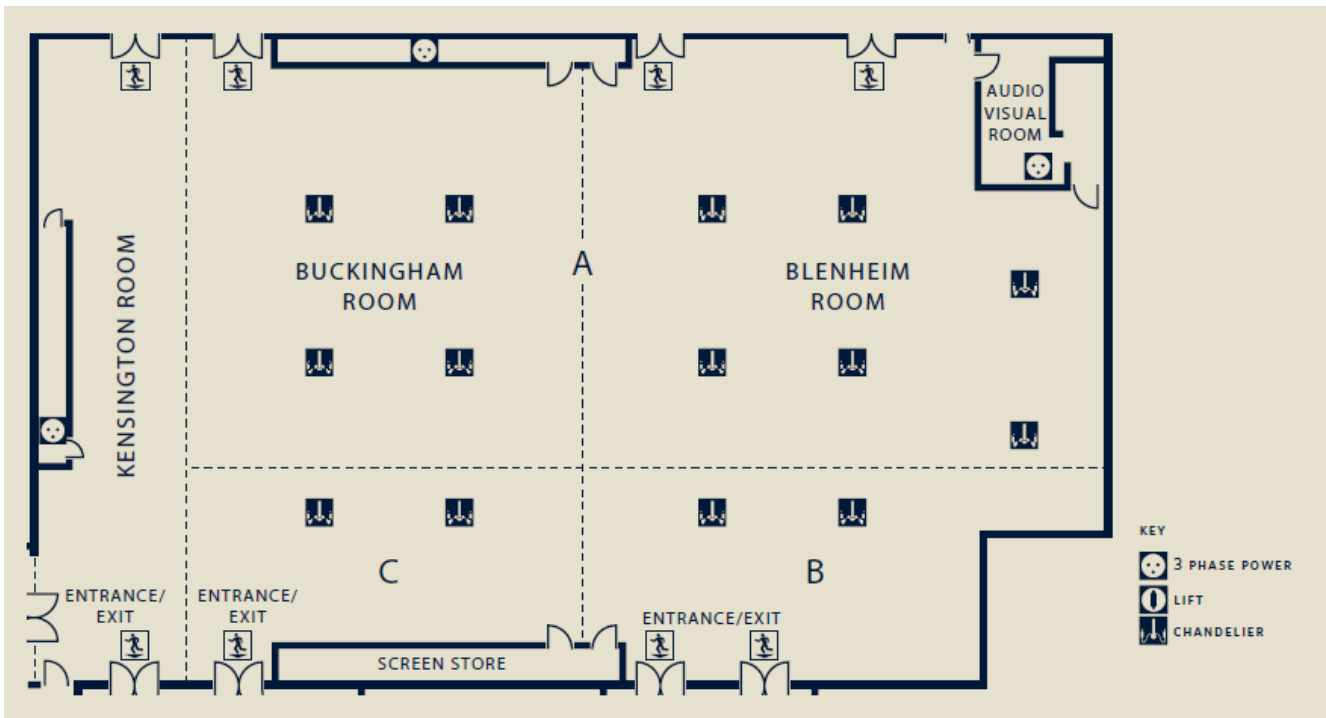
Floor Plan



Palace Suite

CAPACITIES AND DIMENSIONS													
	Boardroom	Theatre	Cabaret	Classroom Wide	Classroom Slim	Seated Dinner	U-Shape	Reception	Buffet	Dimensions L x W x H (ft)	Dimensions L x W x H (m)	Area (ft ²)	Area (m ²)
Palace suite													
Complete	—	816	384	272	408	540	500	900	600	120'1" x 71'4" x 14'1"	36.60 x 21.74 x 4.30	7,748	719.8
Kensington	30	70	—	—	35	—	32	—	—	71'4" x 17'1" x 9'5"	21.74 x 5.20 x 2.90	1,217	113.1
Buckingham	—	374	144	124	187	250	—	350	250	65' x 47'2" x 14'1"	19.80 x 14.40 x 4.30	3,068	285
Blenheim	—	270	160	90	135	200	—	350	200	71'1" x 54'8" x 14'1"	21.75 x 16.70 x 4.30	3,462	321.6

Floor Plan

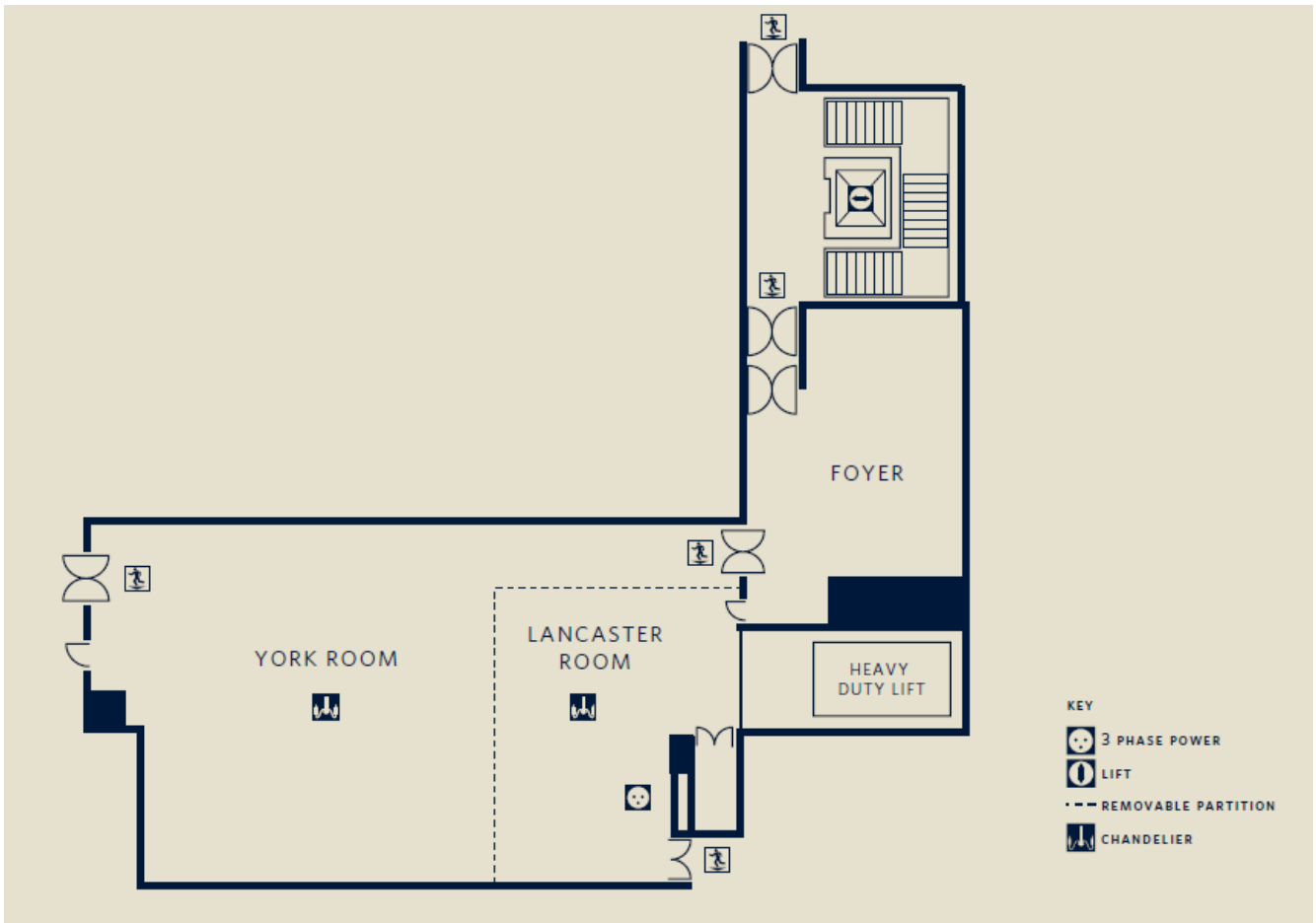


Windsor Suite

CAPACITIES AND DIMENSIONS

	Boardroom	Theatre	Cabaret	Classroom	Lunch/Dinner	Dinner Dance	U-Shape	Reception	Buffet	Back Projection	Dimensions L x W x H (ft)	Dimensions L x W x H (m)	Area (ft ²)	Area (m ²)
Windsor suite														
Complete	55	250	160	120	200	140	55	250	200	140	72'7" x 39'5" x 8'1"	22.00 x 12.04 x 2.47	2,634	244.7
York	40	130	70	60	150	—	40	200	200	—	46'1" x 39'5" x 8'1"	14.04 x 12.04 x 2.47	1,770	164.42
Lancaster	15	60	20	25	40	—	15	60	60	—	32'7" x 25'9" x 8'1"	9.9 x 7.90 x 2.47	723	67.15

Floor Plan



Mezzanine Rooms

CAPACITIES AND DIMENSIONS	CAPACITIES AND DIMENSIONS								Dimensions		Area (sq)	
	Boardroom	Theatre	Cabaret	Classroom	Lunch/Dinner	U-Shape	Reception	Buffet	L x W x H (ft)	L x W x H (m)	Area (sq)	Area (m ²)
WESTMINSTER SUITE												
Complete	52	130	80	70	100	60	180	160	71.4 x 18 x 8.1	21.74 x 5.48 x 2.46	1285.20	146.5
Cadogan	20	40	24	15	30	18	40	40	23 x 18 x 8.1	7 x 5.48 x 2.46	414	38.36
Berkeley	20	40	24	15	30	18	40	40	23 x 18 x 8.1	7 x 5.48 x 2.46	414	38.36
Belgrave	20	40	24	15	30	18	40	40	23 x 18 x 8.1	7 x 5.48 x 2.46	414	38.36
PARK SUITE												
Complete	40	130	70	70	120	40	160	140	42.42 x 31.1 x 8.10	13.37 x 9.66 x 2.47	1319.26	129.15
Regent's	26	80	40	50	60	27	70	80	31.1 x 22.78 x 8.10	9.66 x 7.86 x 2.47	708.46	75.93
St James	26	60	32	36	50	25	50	50	31.1 x 18.91 x 8.10	9.66 x 5.76 x 2.47	588.10	55.64
THAMES SUITE												
Complete	40	130	72	60	90	44	120	120	46.2 x 24.8 x 7.1	14.7 x 7.52 x 2.16	1249.6	110.54
Waterloo	16	25	20	14	20	20	—	—	24.8 x 11. x 7.1	7.52 x 3.33 x 2.16	312.40	25.04
Tower	16	25	20	14	20	14	—	—	24.8 x 11. x 7.1	7.52 x 3.33 x 2.16	312.40	25.04
Chelsea	16	25	20	14	20	14	—	—	24.8 x 11. x 7.1	7.52 x 3.33 x 2.16	312.40	25.04
Richmond	16	25	20	14	20	14	—	—	24.8 x 11. x 7.1	7.52 x 3.33 x 2.16	312.40	25.04
CLARENCE SUITE												
Complete	16	30	—	16	20	—	50	50	29.55 x 16.8 x 8.16	9 x 5.12 x 2.49	496.44	46.08
VICTORIA SUITE												
Complete	28	66	—	40	—	—	—	—	37.2 x 13.1 x 8.2	11.32 x 4 x 2.49	487.32	45.28

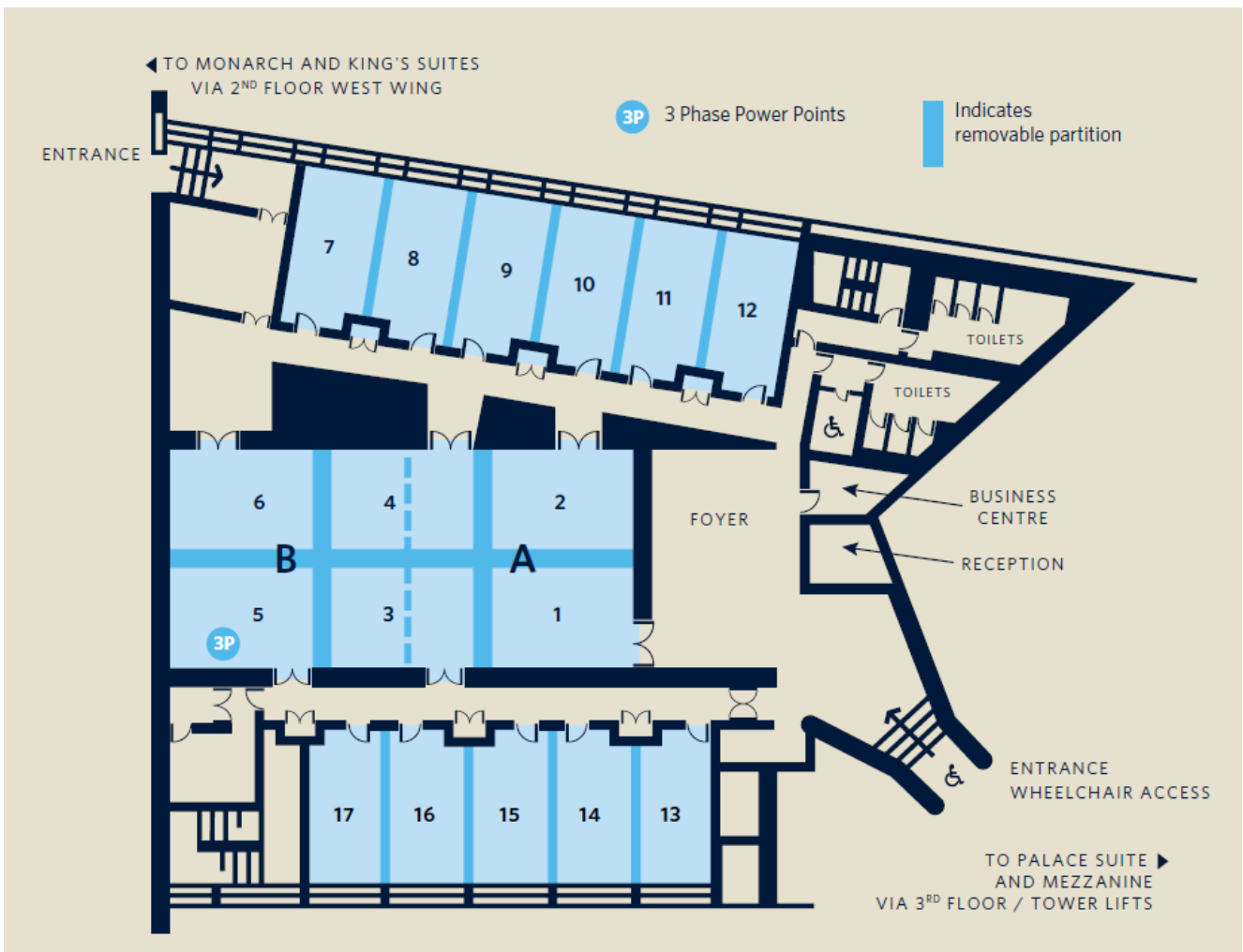
Floor Plan



Hilton Meeting Rooms

Meeting rooms	CAPACITIES AND DIMENSIONS					Dimensions L x W x H (ft)	Dimensions L x W x H (m)	Area (ft ²)	Area (m ²)
	Boardroom	Theatre	Cabaret	U-Shape	Classroom				
Room A or B	30	100	60	34	55	30'5" x 30'5" x 9'2"	9.37 x 9.37 x 2.80	930.25	87.79
Room 1-6 combined	70	200	96	68	100	62'2" x 30'1" x 9'2"	18.95 x 9.17 x 2.80	1,872.22	173.77
Room 1/2/3/4/5/6	14	28	20	14	10	19'1" x 14'6" x 9'2"	6.4 x 4.42 x 2.80	278.86	28.29
Room 7-12 combined	66	122	80	58	86	68'7" x 22'26" x 6'94"	20.94 x 6.78 x 2.11	1,529.26	141.97
Room 7/8/9/10/11/12	12	22	16	12	11	22'26" x 11'15" x 6'94"	6.78 x 3.39 x 2.11	248.19	22.78
Room 13-17 combined	46	90	70	44	60	56'2" x 21'15" x 6'96"	17.12 x 6.44 x 2.12	1,188.63	110.25
Room 13/14/15/16/17	12	18	16	10	10	21'15" x 10'7" x 6'96"	6.44 x 3.26 x 2.12	226.3	20.99
Combination room options									
Room 1+2 or 3+4 or 5+6	25	40	32	25	20	41'14" x 30'5" x 9'2"	12.52 x 9.29 x 2.8	1,254.77	116.31
Room 1-4 or 3-6	44	80	65	42	60	41'9" x 32' x 10'3"	12.8 x 9.8 x 3.1	1,341	124.6
Room 7+8 or 9+10 or 11+12	22	40	30	22	22	22'6" x 22'26" x 6'94"	6.88 x 6.78 x 2.11	503.07	46.64
Room 7-9 or 10-12	34	58	50	34	38	34'28" x 22'26" x 6'94"	10.44 x 6.78 x 2.11	763.07	70.78
Room 13+14 or 15+16 or 16+17	22	40	30	22	16	22'4" x 21'15" x 6'96"	6.82 x 6.44 x 2.12	473.76	56.40
Room 13-15 or 15-17	34	58	50	34	22	33'66" x 21'15" x 6'96"	10.25 x 6.44 x 2.12	711.91	84.76

Floor Plan



BOARDROOMS

Boardrooms

Boardroom	Boardroom	Dimensions L x W x H (ft)	Dimensions L x W x H (m)	Area (ft ²)	Area (m ²)
Boardroom					
Boardroom 1	16	29'6" x 17'2" x 6'7"	9.02 x 5.24 x 2.04	409	37.9
Boardroom 2	16	29'4" x 16'6" x 6'7"	8.96 x 5.07 x 2.04	479	44.5
Boardroom 3	16	31'4" x 16'6" x 6'7"	9.58 x 5.07 x 2.20	512	47.6
Praed Room	14	22'6" x 16'9" x 7'10"	6.88 x 5.11 x 2.40	—	—

Floor Plan

