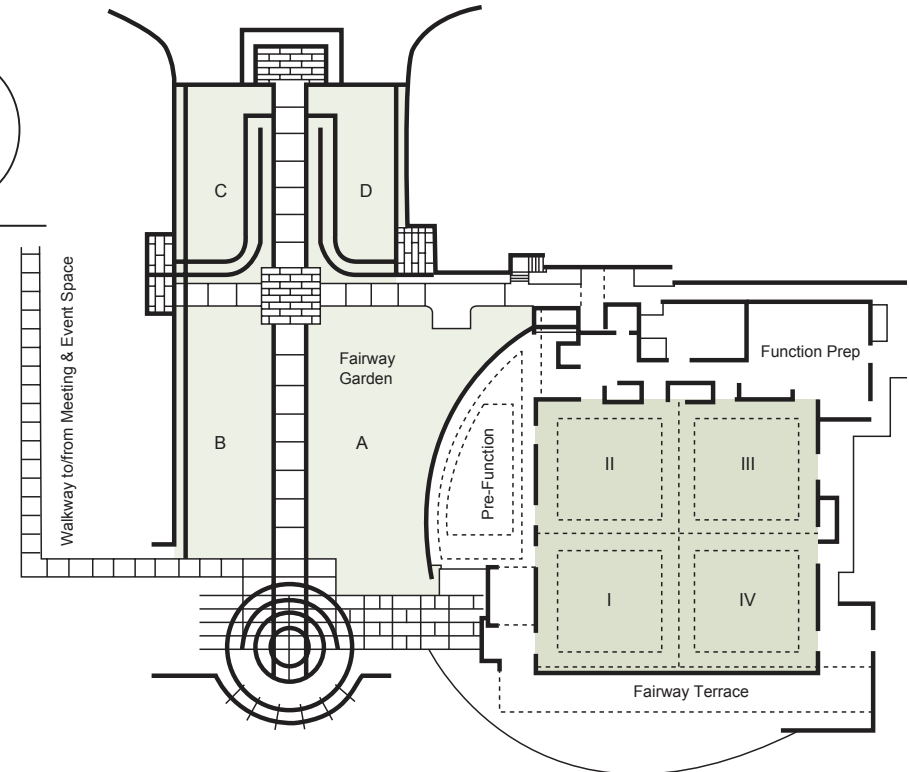
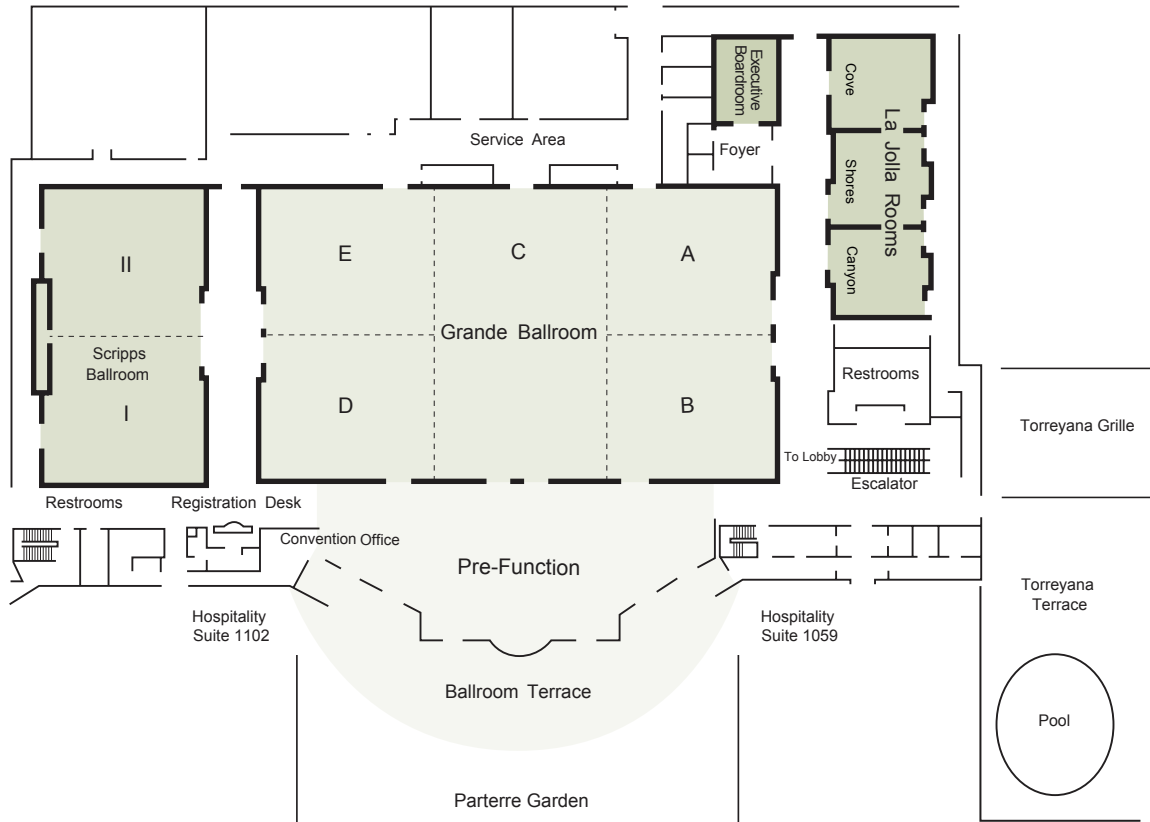


Floor Plans



Hilton La Jolla Torrey Pines Capacity Chart & Floor Plans

Room Name	Square Feet	Dimensions	Ceiling height	Classroom	Theater	U-Shape	Hollow Square	Rounds of 10	Reception	Exhibits 8x10
Grande Ballroom	12,035	83'x145'	15'3"	810	1,370	-	-	1050	1,500	64
Ballroom A,B,D or E	2,010	41'8"x48'3"	15'3"	108	192	41	54	140	250	
Ballroom AB,C or DE	4,005	83'x48'3"	15'3"	198	456	-	90	310	500	18
Ballroom ABC or CDE	8,023	83'x96'8"	15'3"	540	924	-	-	700	1,000	38
Prefunction Grande Ballroom	4,000	-	-	-	-	-	-	-	500	-
Scripps Ballroom	3,348	41'x81'8"	14'	180	350	-	84	210	480	-
Scripps Ballroom I or II	1,671	41'x40'9"	14'	81	140	38	46	100	240	36
La Jolla Rooms										
Cove, Shore or Canyon	624	24' x 26'	12'	36	60	25	30	40	80	-
Executive Board Rooms	450	18' x 25'	9'	Permanent Seating for 12 people						
Hospitality Suites										
Pacific (Lobby Level)	200	13'x21'	8'6"	-	16	9	8	10	10	-
View (Lobby Level)	200	13'x21'	8'6"	-	16	9	8	10	10	-
Ocean (Lobby Level)	528	22'x24'	8'6"	27	45	21	24	40	70	-
1031, 1059 and 1102	450	18'x25'	8'6"	22	35	18	16	30	45	-
Outdoor Space										
Parterre Garden I	5,472	76'x72'	-	-	-	-	-	350	710	500
Parterre Garden II	3,072	48'x64'	-	-	-	-	-	150	320	200
Parterre Terrace	2,560	-	-	-	-	-	-	-	-	320
Pacific View Terrace	3,600	-	-	-	-	-	-	80	100	-
Poolside	7,000	-	-	-	-	-	-	250	350	-
Fairway Ballroom	6,203	78.5'x79'	14'	400	700	-	-	500	800	27
Fairway I or II or III or IV	1,482	38'x39'	14'	75	150	35	40	110	150	-
1/2 Fairway Ballroom	3,042	39'x78'	14'	160	300	65	75	240	400	
Prefunction Fairway Ballroom	2,460	30'x82'	17'	-	-	-	-	-	200	-
Outdoor Space										
Fairway Terrace	3,600	-	-	-	-	-	-	80	100	-
Fairway Gardens	7,200	60'x120'	-	-	-	-	-	220	500	-