



Anaheim

The Anaheim Convention Center (ACC) is consistently ranked as one of the top meeting venues in the U.S. in terms of its size, attendance, overall building services and amenities.

The LEED® certified 1.6 million-square-foot ACC is the largest convention center on the West Coast. This ultra-modern facility boasts the capability to host mega-conventions, meetings, tradeshows and events with ease.

The facility features 813,000 square feet of exhibit space, a 38,000-square-foot ballroom capable of sit-down banquets for 2,560 people, plus a variety of flexible space to accommodate meetings of all sizes. Once the current expansion is complete, the ACC will have more than one million square feet of space available for exhibits.

In addition, the picturesque outdoor Palm Court, Arena Plaza and Grand Plaza offer sunny possibilities for year-round special events, receptions and networking.

Anaheim Convention Center by the numbers

- Total acreage: **53**
- Total facility area: **1.6 million square feet**
- Exhibit space: **813,000 square feet**
- Seating space: **Arena seating for 7,500**
- Meeting rooms: **51**
- Meeting space: **152,000 square feet**
- Main ballroom: **38,000 square feet**
- Pre-function lobby space: **176,000 square feet**
- Outdoor event space: **100,000 square feet**
- ACC North (summer 2017): **200,000 square feet**

ANAHEIM CONVENTION CENTER CAMPUS

KATELLA AVE.

SHUTTLE PICK UP & DROP OFF



LOADING DOCKS

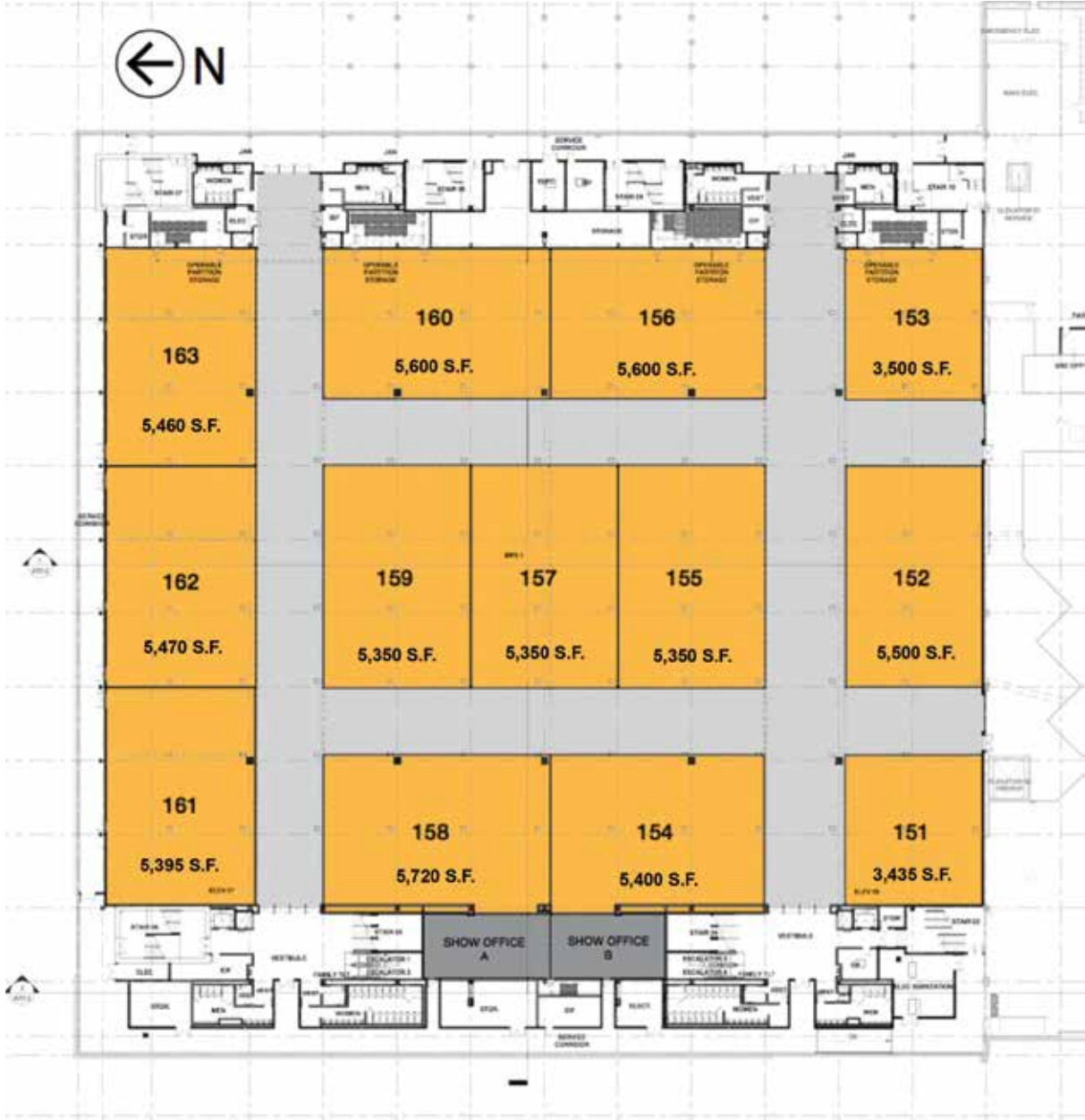


SHUTTLE PICK UP & DROP OFF

HARBOR BLVD.

ACC NORTH – COMING IN 2017

LEVEL ONE



LEGEND

- MEETING ROOM OPTIONS
- SHOW OFFICES

Note: All specifications and capacities are estimates and subject to building completion.

ACC NORTH ESTIMATED CAPACITIES

LEVEL ONE

100,000 gsf of carpeted, flexible multipurpose meeting or exhibit space

Maximum of 13 meeting rooms (Ranging from 3,435 S.F. - 5,720 S.F.)

Can also be divided into two halves

Ceiling Height = 25 ft

ROOM NAME	SQUARE FEET	THEATER	CLASSROOM	BANQUET ROUNDS	10' X 10' BOOTHS
Entire First Level	100,000	10,000	4,160	8,320	500
151	3,435	370	230	280	
152	5,500	610	370	450	
153	3,500	380	240	280	
154	5,400	570	350	430	
155	5,350	570	350	430	
156	5,600	610	370	450	
157	5,350	570	350	430	
158	5,720	610	370	450	
159	5,350	570	350	430	
160	5,600	610	370	450	
161	5,395	570	350	430	
162	5,470	570	350	430	
163	5,460	570	350	430	
Combinations					
154+158	11,120	1,180	720	880	
155+157+159	16,050	1,710	1,050	1,290	
156+160	11,200	1,220	740	900	
161+162+163	16,325	1,710	1,050	1,290	

Note: All specifications and capacities are estimates and subject to building completion.

ACC NORTH – COMING IN 2017

LEVEL TWO



LEGEND

- MEETING ROOM OPTIONS
- PRE-FUNCTION SPACE

Note: All specifications and capacities are estimates and subject to building completion.

ACC NORTH ESTIMATED CAPACITIES

LEVEL TWO

100,000 gsf of carpeted, pillar-free, flexible multipurpose meeting space

Maximum of 34 meeting rooms (Ranging from 1,200 S.F. - 5,325 S.F.)

Entire level can be divided in half or in thirds

Ceiling Height = 25 ft

ROOM NAME	SQUARE FEET	THEATER	CLASSROOM	BANQUET ROUNDS	10' X 10' BOOTHS
Entire Second Level	100,000	10,000	4,160	8,320	500
251 A	1,745	180	110	130	
251 B	1,745	180	110	130	
251 AB	3,490	370	230	280	
252 A	1,745	180	110	130	
252 B	1,745	180	110	130	
252 C	1,745	180	110	130	
252 AB / 252 BC	3,490	370	230	280	
252 ABC	5,235	570	350	430	
253 A	1,745	180	110	130	
253 B	1,745	180	110	130	
253 C	2,500	270	170	200	
253 AB	3,490	370	230	280	
253 BC	4,245	440	270	320	
253 ABC	5,990	640	390	480	
254 A	1,730	180	110	130	
254 B	1,730	180	110	130	
254 AB	3,460	370	230	280	
255 A	1,775	190	120	140	
255 B	1,775	190	120	140	
255 C	1,775	190	120	140	
255 AB / 255 BC	3,550	380	240	280	
255 ABC	5,325	570	350	430	
256 A	2,187	220	130	160	
256 B	2,187	220	130	160	
256 AB	4,374	470	290	350	
257	5,325	570	350	430	
258 A	2,187	220	130	160	
258 B	2,187	220	130	160	

Note: All specifications and capacities are estimates and subject to building completion.

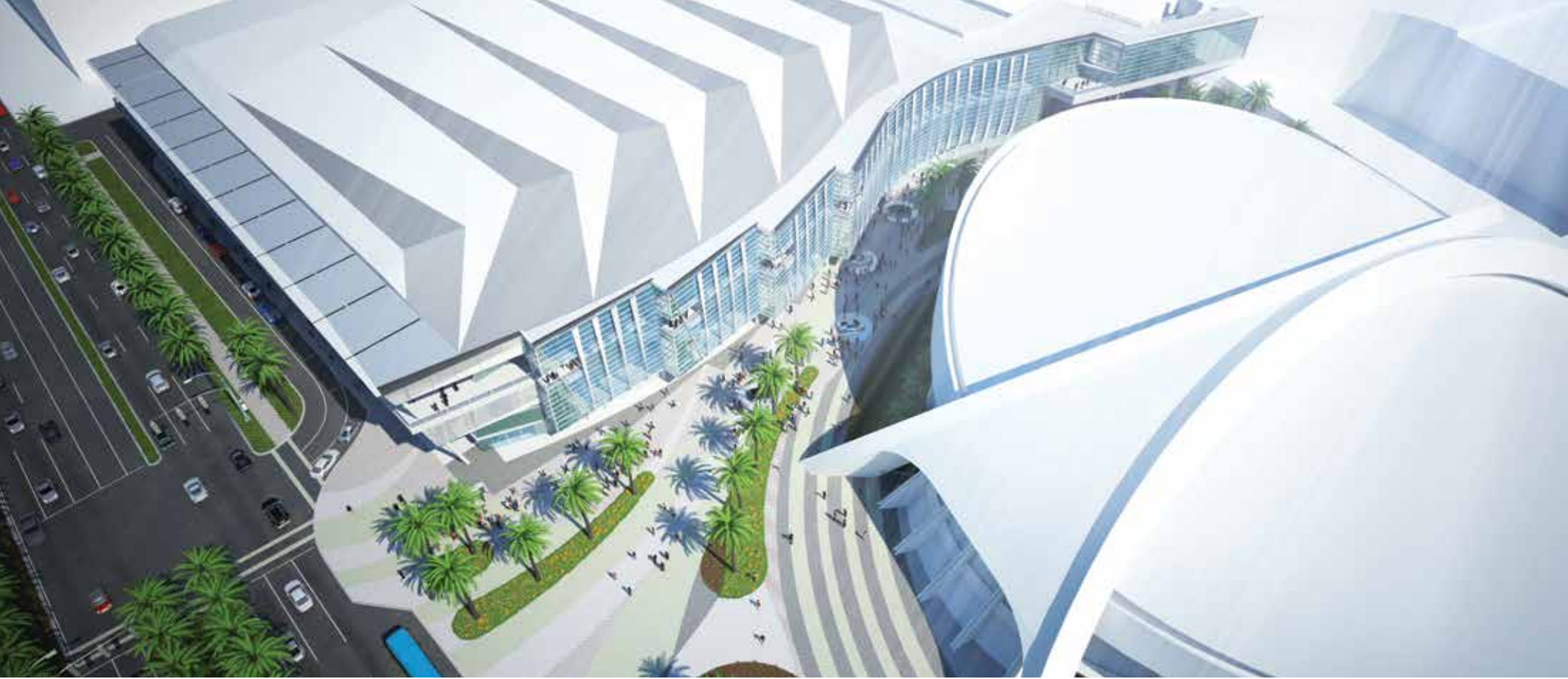
ACC NORTH ESTIMATED CAPACITIES

LEVEL TWO

ROOM NAME	SQUARE FEET	THEATER	CLASSROOM	BANQUET ROUNDS	10' X 10' BOOTHS
258 AB	4,374	470	290	350	
259 A	1,730	180	110	130	
259 B	1,730	180	110	130	
259 AB	3,460	370	230	280	
260 A	1,775	190	120	140	
260 B	1,775	190	120	140	
260 C	1,775	190	120	140	
260 AB / 260 BC	3,550	380	240	280	
260 ABC	5,325	570	350	430	
261 A	2,187	220	130	160	
261 B	2,187	220	130	160	
261 AB	4,374	470	290	350	
262 A	1,200	130	80	90	
262 B	1,200	130	80	90	
262 C	1,200	130	80	90	
262 AB / 262 BC	2,400	260	160	200	
262 ABC	3,600	400	240	290	
263 A	1,200	130	80	90	
263 B	1,200	130	80	90	
263 C	1,200	130	80	90	
263 AB / 263 BC	2,400	260	160	200	
263 ABC	3,600	400	240	290	
264 A	1,200	130	80	90	
264 B	1,200	130	80	90	
264 C	1,750	180	110	130	
264 AB	2,400	260	160	200	
264 BC	2,950	320	190	240	
264 ABC	4,150	440	270	320	

Combinations					
251+252+253	14,715	1,580	970	1,190	
255+257+260	15,975	1,710	1,050	1,290	
256+258+261	13,122	1,410	870	1,050	
262+263+264	11,350	1,220	750	900	

Note: All specifications and capacities are estimates and subject to building completion.



ACC NORTH - COMING IN 2017



MORE SPACE: 200,000 square feet of flexible, multipurpose, carpeted space on two levels including 100,000 square feet of column-free space on the top level with finished ceilings. Movable air walls offers a variety of meeting room layout options.

PARKING: 1,350 parking spaces, dedicated loading docks and improved vehicle access.

PEDESTRIAN BRIDGE: A climate-controlled connection to the second level of the existing facility.

CURB APPEAL: The new space gives the ACC increased visibility with an impressive main entrance.



Anaheim Convention Center

800 W. Katella Avenue, Anaheim CA 92802
714.765.8950 | anaheimconventioncenter.com

Visit Anaheim

800 W. Katella Avenue, Anaheim CA 92802
714.765.8888 | visitanahiem.org/meetings
email: meeting.inquiry@visitanahiem.org

